

# State of Wyoming Corner Record

(In compliance with the **CORNER PERPETUATION AND FILING ACT**, Wyoming Statutes, 1997 Section 33-29-140 et. seq., and the Rules and Regulations of the Board of Professional Engineers and Professional Land Surveyors)

Reverse side of this form may be used if more space is needed.

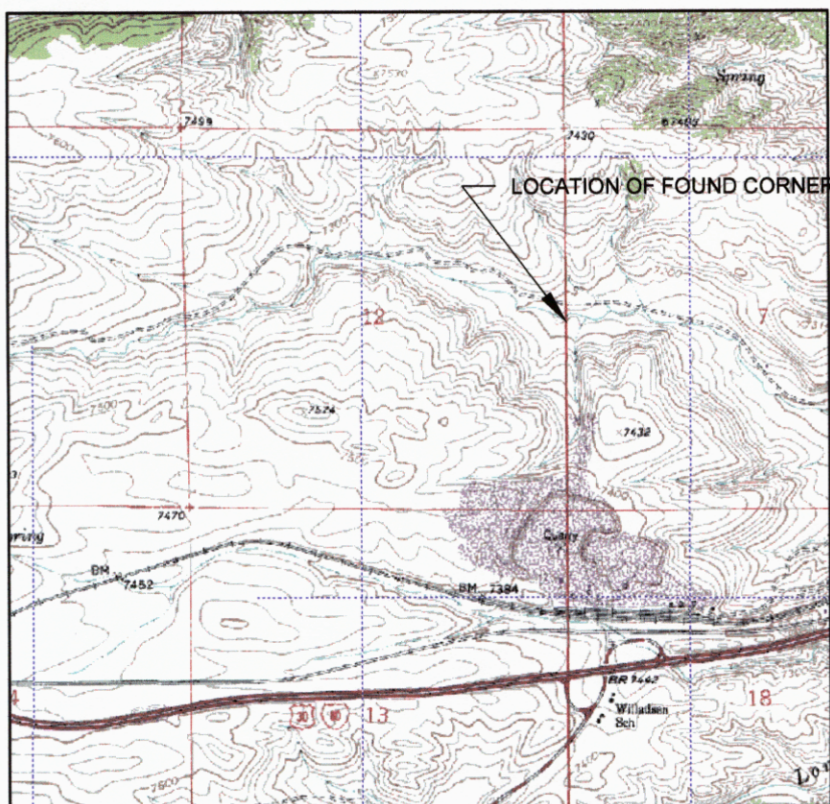
Record of original survey and citation of source of historical information (if corner is lost or obliterated). Description of corner monumentation evidence found and/or monument and accessories established to perpetuate the location of this corner. Sketch of relative location of monument, accessories, and reference points with course and distance to adjacent corner(s) (if determined in this survey). Method and rationale for reestablishment of lost or obliterated corner.

**FOUND:**

STANDARD BLM BRASS CAP STAMPED 1935

**SET:**

NOTHING



**Monument location**

Date of Field Work: 4-6-7-05

Office Reference: 2590

**Location Sketch**



**Monument Inscription**

**Cross Index Plat**

	1	2	3	4	5	6	7	8	9	10	11	12	13	14	15	16	17	18	19	20	21	22	23	24	25		
A																											A
B	+	+	+	+	+	+	+	+	+	+	+	+	+	+	+	+	+	+	+	+	+	+	+	+	+	+	B
C		6																									C
D	+	+	+	+	+	+	+	+	+	+	+	+	+	+	+	+	+	+	+	+	+	+	+	+	+	+	D
E																											E
F	+	+	+	+	+	+	+	+	+	+	+	+	+	+	+	+	+	+	+	+	+	+	+	+	+	+	F
G																											G
H	+	7																									H
J																											J
K	+	+	+	+	+	+	+	+	+	+	+	+	+	+	+	+	+	+	+	+	+	+	+	+	+	+	K
L																											L
M	+	18																									M
N																											N
O	+	+	+	+	+	+	+	+	+	+	+	+	+	+	+	+	+	+	+	+	+	+	+	+	+	+	O
P																											P
Q	+	19																									Q
R																											R
S	+	+	+	+	+	+	+	+	+	+	+	+	+	+	+	+	+	+	+	+	+	+	+	+	+	+	S
T																											T
U	+	30																									U
V																											V
W	+	+	+	+	+	+	+	+	+	+	+	+	+	+	+	+	+	+	+	+	+	+	+	+	+	+	W
X																											X
Y	+	31																									Y
Z																											Z

Firm/Agency, Address

AVI PC  
2035 WESTLAND ROAD  
CHEYENNE, WYOMING

This corner record was prepared by me or under my direction and supervision.

*SEAL & SIGNATURE*

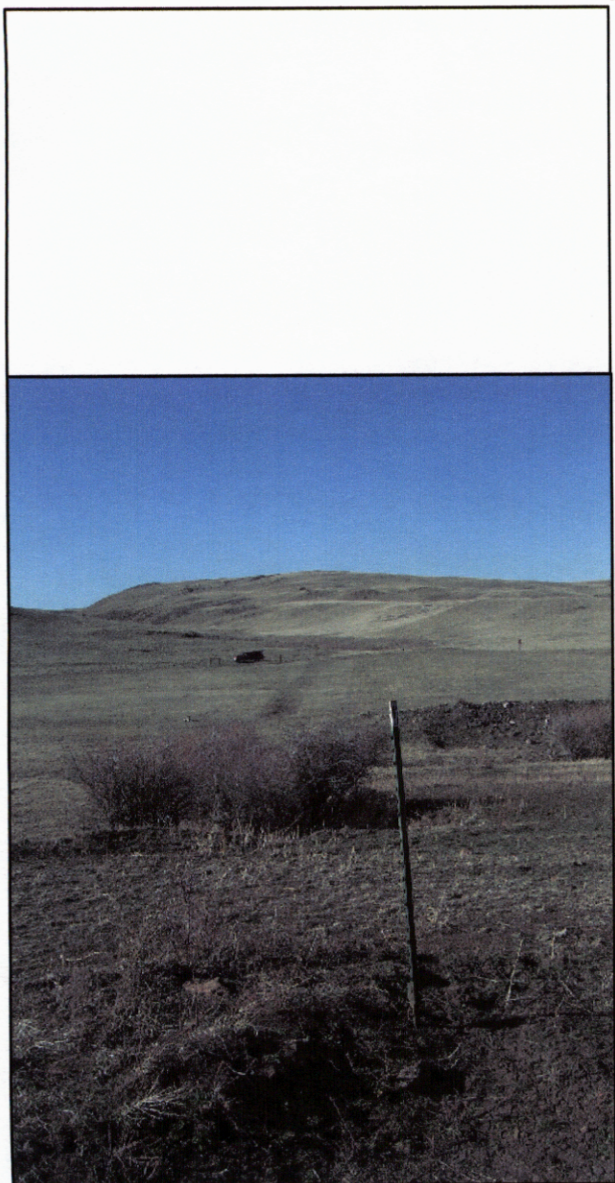
Telephone Number: 307-637-6017



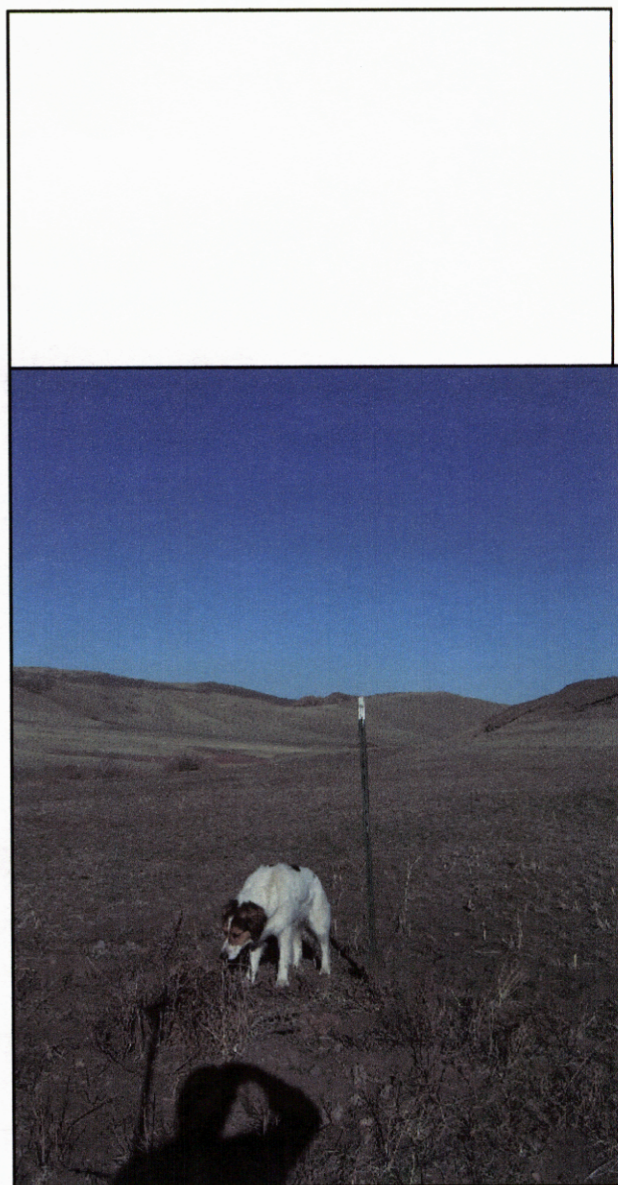
RECORDED 4/15/2005 AT 4:20 PM REC# 414375 BK# 1875 PG# 1102  
 DEBRA K. LATHROP, CLERK OF LARAMIE COUNTY, WY PAGE 1 OF 2

Corner Name E 1/4 Corner Section 12, T 13 N, R 70 W, 6th P.M.  
 County: Laramie Wyoming

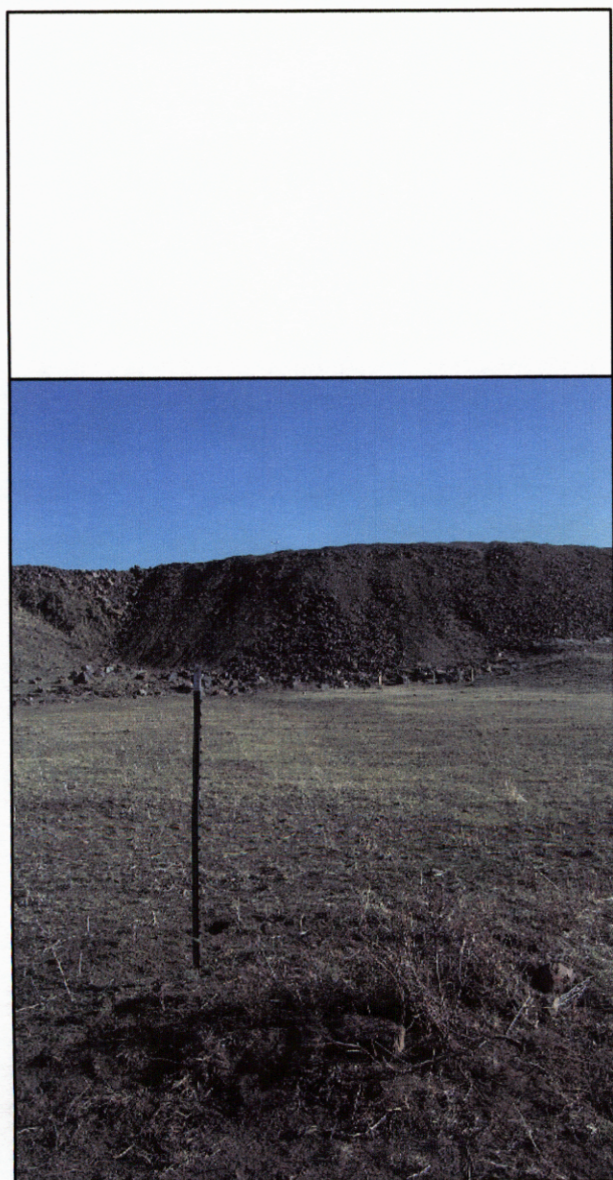
Cross-Index No.: G-25



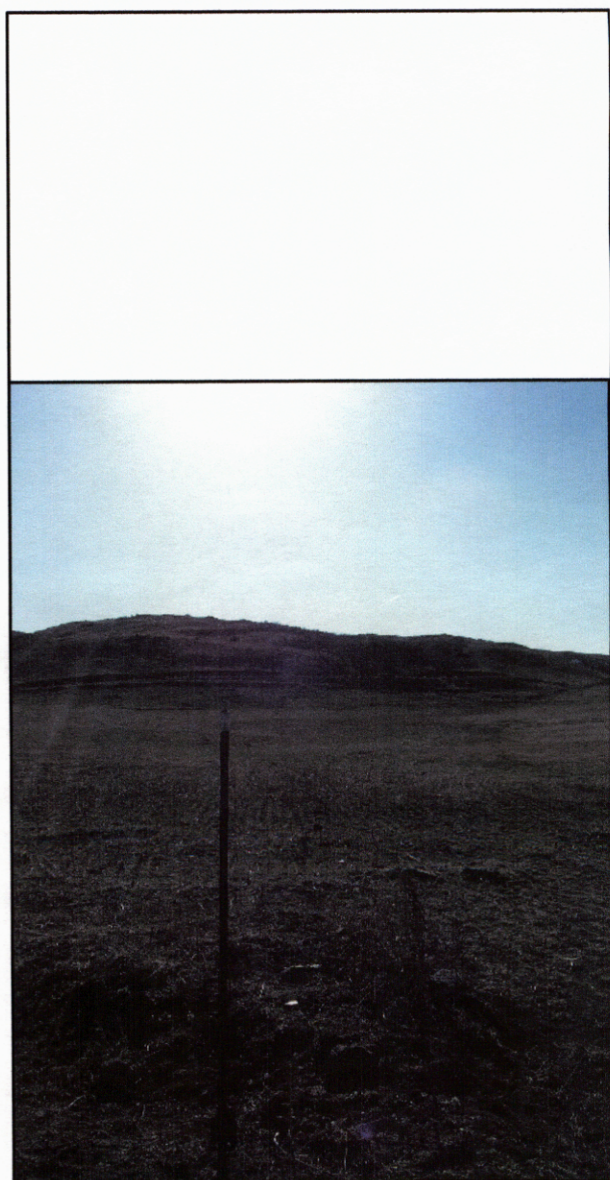
View North



View East



View South



View West

RECORDED 4/15/2005 AT 4:20 PM REC# 414375 BK# 1875 PG# 1103  
DEBRA K. LATHROP, CLERK OF LARAMIE COUNTY, WY PAGE 2 OF 2



G-25-13-70